

Vertical Drainage Layer

Product: ML2103 0.25 in. / 6.0 mm Thickness

Description:

The Columbia Green Technologies Vertical Drainage Layer is designed to eliminate hydrostatic pressure from behind foundation walls, retaining walls and planters on plaza decks, and balconies. A needle punched, nonwoven filter fabric is heat-laminated to one side of the mat to hold soil away from the wall or deck and keep the drainage plane clear. The three-dimensional Vertical Drainage Layer is composed of extruded polymer woven into an entangled cusped geometric patterned matrix with heat-welded junctions. This forms a resilient structure specifically designed to provide superior drainage and airflow. The Vertical Drainage Layer is a rolled product developed by drainage engineering experts.



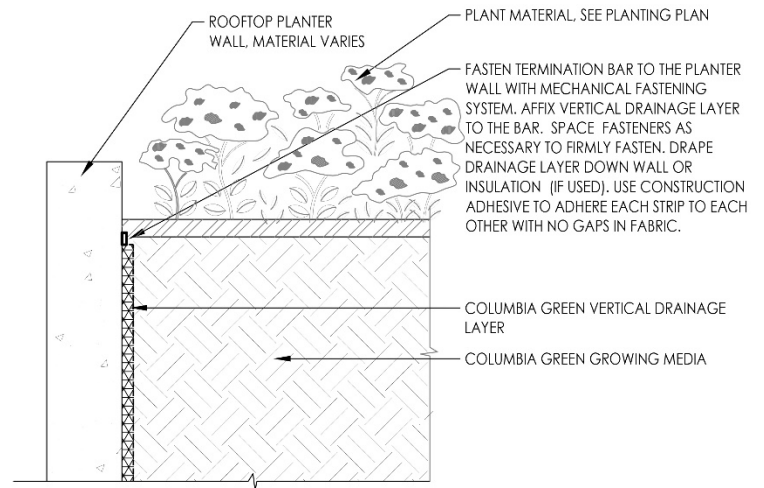
Installation is simple and straight forward, involving only heavy-duty scissors to cut to shape.

Benefits

- Fire resistant- Class A fire rated product
- Minimal deflection, and no creep or long-term degradation
- Provides a thin profile for tight construction assemblies
- Lightweight and easy to handle

Storage/ Installation

- Install using a termination bar or ledger board or other securement. Backfill in 12" lifts, allowing for settlement.
- Do not overlap vertical drainage mat material but overlap the provided 3" filter fabric seams.
- Store components in a dry area. Avoid prolonged exposure to sunlight, heat, sparks and open flames.
- Store away from sources of ignition and extremely high temperatures.



Vertical Drainage Layer at Planter

LEED Information:

- Manufacturing Location: Euclid, Ohio 44117
- Pre-Consumer Recycled Content: 40%

Technical Data– 0.25in. / 6.0 mm Thickness:

Physical Property	Value
Polymer	Polypropylene
Thickness	0.25 in
Roll Dimension	22 x 22 x 48 in.
Roll Length	100 ft.
Roll Coverage	400 ft ²
Roll Weight	53 lbs.
Flow Rate	≥ 10 gpm