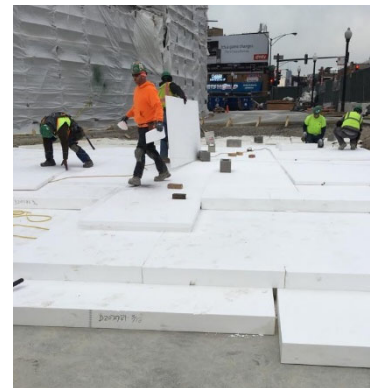


EPS Geofoam Fill

Description:

Columbia Green Geofoam is made from expanded polystyrene and used for lightweight structural fill on rooftops. Ideal for landscaping applications, especially on projects with weight restrictions. Our Geofoam is used to fill planter bottoms, create landscape mounding or to lift and align rooftop surfaces like pedestals or green roof trays with a product that is 100 times lighter than soil. It is a great way to fill large areas without requiring compaction with a lower global warming potential than other foam options. Available as blocks, sheets, tapers or custom sizes, or can be cut in the field.



Product Specifications

- Manufactured to ASTM D6817 standards
- Less Global Warming potential than other foam options.
- Standard thickness up to 40", width up to 72", length up to 288" to meet project geometry
- Custom sizes: 1" to 40" thick

Installation

- Typical Material Grade Recommendations: **EPS 19** under Pregrown Trays and Extensive Green roofs, **EPS 39** under Intensive green roofs and Pedestal Pavers. Consult Project Engineer
- Blocks are easily cut in the field.

Storage:

- Store components in a dry area away from sources of ignition and extremely high temperatures.
- Handle and store materials, and place equipment in a manner to avoid overloading roof structure or damaging roofing membrane.

Precautions:

- Avoid prolonged exposure to sunlight, heat, sparks and open flames.
- Wash exposed skin prior to eating, drinking or smoking and at the end of each shift.
- Use caution when cutting and laying product.

Physical Properties

ASTM D6817 Type	EPS 12	EPS 15	EPS 19	EPS 22	EPS 29	EPS 39	EPS 46
Density	0.70 lbs/CF	0.90 lbs/CF	1.15 lbs/CF	1.35 lbs/CF	1.80 lbs/CF	2.40 lbs/CF	2.85 lbs/CF
Compressive Resistance	For 1% deformation, see load chart above. Contact us for 5% and 10 % deformation						
Flexural Strength	10.0 psi	25.0 psi	30.0 psi	35.0 psi	50.0 psi	60.0 psi	75.0 psi
Buoyancy	61.7 lbs/CF	61.5 lbs/CF	61.3 lbs/CF	61.1 lbs/CF	60.6 lbs/CF	60.0 lbs/CF	59.5 lbs/CF
Surface Burning	US via E84 = Flame Spread 20 Smoke Developed 400						
Elastic Modulus	220 psi	360 psi	580 psi	730 psi	1090 psi	1500 psi	1860 psi
Poisson's Ratio	0.05	0.05	0.05	0.05	0.05	0.05	0.05
Termiticide	EPA registered termiticide (TalonGuard) available in compliance with ICC AC239						
Warranty	20-year warranty on physical properties including compressive resistance						

Load Chart at 1% Deformation

Material Grade	PSI	PSF
EPS 12	2.2	317
EPS 15	3.6	518
EPS 19	5.8	835
EPS 22	7.3	1,051
EPS 29	10.9	1,570
EPS 39	15.0	2,160
EPS 46	18.6	2,678