



## Stunning Green AMENITY DECKS

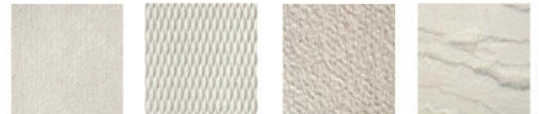
### BENEFITS OF ADDING 'GREEN' TO YOUR AMENITY DECK

- Provide tenants with access to plants and nature in an urban environment
- Creates a relaxing outdoor gathering space for social cohesion or quiet contemplation
- Promote Wellness: Views of vegetated roofs have been shown to reduce stress levels
- Rooftop landscaping spaces can be used for urban agriculture and gardening
- Amenity decks are considered more desirable by tenants, bringing increased rents and occupancy rates
- Green roofs can help contribute toward 14 or more LEED points

#### Amenity Deck Pavers

Ask us about our array of Paver and Pedestal options to fit every project.

Concrete



Wood



Porcelain



### Why Columbia Green?

- Comprehensive green roof solutions; from Extensive to Intensive
- Layered and Tray-based systems
- Multiple warranty options including Single-Source Warranty provided through our Roofing Partners
- Stormwater retention calculations custom to your unique project

**COLUMBIA  
GREEN**  
TECHNOLOGIES  
[www.columbia-green.com](http://www.columbia-green.com)  
[info@columbia-green.com](mailto:info@columbia-green.com)





"We have received nothing but glowing comments, with everyone saying this is the best green roof that they have ever seen."

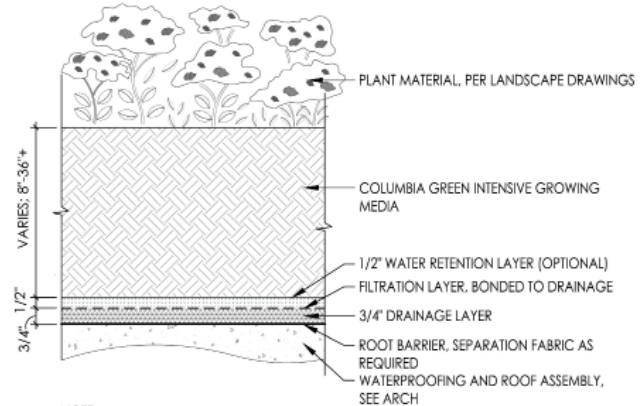
— Julie Currier Vice President, Development | Unico Properties

"As a biophilic design tactic, green roofs provide an essential connection between the built and natural environment. In addition to offering relaxing spaces our tenants enjoy, green roofs can support the regeneration of more robust urban ecosystems and the mitigation of storm water runoff."

— Ben Myers Sustainability Manager | Boston Properties



GBD Architects



TYPICAL AMENITY DECK DETAIL

The Intensive Layered system is designed for rooftop landscapes with perennials, shrubs, and trees. The system consists of a drainage layer, filtration layer, and water retention layer. along with our Intensive media.



## GEOFOAM AND LIGHTWEIGHT FILL

Create depth and mounding with our lightweight fill options

Columbia Green Geofoam- Lightweight fill, easily cut to shape in field to align green roof systems with pedestal pavers or create mounds and contours without overloading the roof.

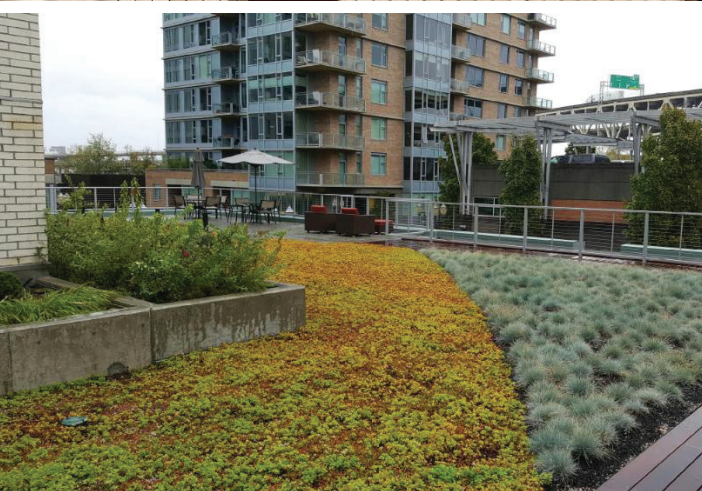
Columbia Green Foam Glass Aggregate- Lightweight, Load Bearing Fill Made from 100% Recycled Glass, a Sustainable Option!

## WARRANTY OPTIONS

There are two types of warranties, Full System warranties that cover the roof membrane and green roof separately and Single Source Warranties that cover protection for the entire roof system together. Columbia Green provides both types.

## GREEN ROOF SYSTEM WEIGHT

Weight can vary according to media depth. Go to our website, or contact us for project specific weight information



### Contact:

Columbia Green National Headquarters  
503.327.8723 | [info@columbia-green.com](mailto:info@columbia-green.com)  
Northeast, Mid-Atlantic, West and Midwest Offices  
[www.columbia-green.com/contact-us](http://www.columbia-green.com/contact-us)

**COLUMBIA  
GREEN**  
TECHNOLOGIES